



# **ShavlikScans SQLTool Database Update Wizard**

---

**User's Guide Version 5.8**

# Table of Contents

<b>WELCOME TO SQLTOOL .....</b>	<b>1</b>
<b>SHAVLIK NETCHK PROTECT™ AND THE SQL BACKEND .....</b>	<b>1</b>
<b>BEFORE YOU START .....</b>	<b>2</b>
<b>RUNNING SQLTOOL.....</b>	<b>3</b>
<b>SELECTING UPGRADE OPTIONS .....</b>	<b>4</b>
<b>SPECIFYING THE NAME OF THE SQL SERVER.....</b>	<b>5</b>
<b>SELECTING AUTHENTICATION.....</b>	<b>6</b>
<b>SELECT AN ACCOUNT TO RUN THE NETCHK PROTECT SERVICE .....</b>	<b>7</b>
<b>DISPLAYING MIGRATION STATUS .....</b>	<b>8</b>
<b>SQLTOOL ERROR CONDITIONS AND MESSAGES .....</b>	<b>9</b>
<b>REVERTING BACK TO A JET DATABASE .....</b>	<b>10</b>
<b>OBTAINING SUPPORT.....</b>	<b>11</b>
<b>END USER LICENSE AGREEMENT.....</b>	<b>12</b>

© 2006 Shavlik Technologies. All rights reserved.

No part of this document may be reproduced or retransmitted in any form or by any means electronic, mechanical, or otherwise, including photocopying and recording for any purpose other than the purchaser's personal use without written permission of Shavlik Technologies.

Shavlik NetChk Protect, Shavlik HFNetChkPro Plus, Shavlik NetChk Spyware, Shavlik NetChk Agent, Shavlik Technologies, and the Shavlik Technologies logo are trademarks of Shavlik Technologies. Microsoft and Windows are registered trademarks of Microsoft Corporation.

All other trademarks, tradenames, or images mentioned herein belong to their respective owners.

# Welcome to SQLTOOL

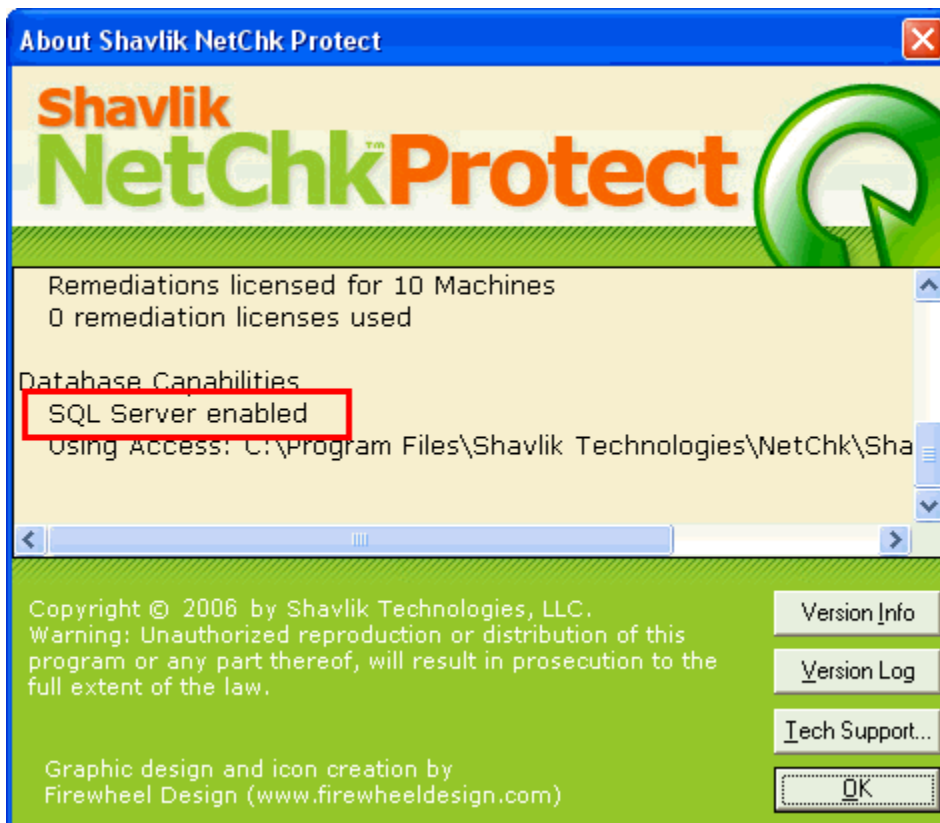
SQLTOOL is a wizard that guides you through the process of upgrading the ShavlikScans database from Jet to SQL Server 2000 or SQL Server 2005. Before running SQLTOOL, read the section titled **Before You Start** for important prerequisite information.

## Shavlik NetChk Protect™ and the SQL Backend

Shavlik NetChk Protect™ 5 can be configured to store all scan, patch deployment, and signature remediation results in an SQL Server database. The SQL Server backend is a feature unique to Shavlik NetChk Protect and enables real-time collaboration and knowledge management amongst all individuals responsible for performing patch managements and/or spyware management tasks. Benefits to using the SQL database include:

- Enhanced performance when scanning more than 250 machines
- Storage of data on a remote machine
- Ability for multiple Shavlik NetChk Protect consoles to share templates, comments, reports, and scan results

SQL Server support requires a Pro Plus license and is therefore not available to users with only a Basic edition of the program. In addition, in order to use the SQL Server backend you must have an SQL-enabled license key. To verify that you have an SQL-enabled license key, select **Help > About** on the Shavlik NetChk Protect console and ensure that it says **SQL Server enabled**.



# Before You Start

Before you can update the ShavlikScans Jet database to SQL Server, please ensure you meet the following prerequisites.

## System Prerequisites

1. **You must have administrative access to your local machine.**
2. **Your Shavlik NetChk Protect license key must be enabled for use with an SQL Server.** The option of upgrading the ShavlikScans Jet database to an SQL Server database is only available with an SQL Server-enabled license. To determine if your installation is SQL Server enabled, please check the **Help > About** dialog. (If you do not own a license that is enabled for SQL Server and would like to purchase one, please contact your Shavlik Technologies sales representative.)
3. **SQL Server 2000 Service Pack 3 (or later) or SQL Server 2005 is required.** For security reasons, we require that SQL Server 2000 Service Pack 3 (or later) or SQL Server 2005 be installed on the specified SQL Server.
4. **SQL Server client tools must be installed on the console machine containing the JET database that you wish to convert to a SQL database.** The client tools are necessary to migrate the database – these tools are not required if you simply wish to connect to an existing Shavlik NetChk Protect SQL Server database.

The client tools require a significant amount of disk space. Consult the SQL documentation for the disk space requirements.

5. **You must have access to the specified SQL Server.** The Shavlik SQL option will support either Windows authentication or SQL Server authentication to access the specified SQL server. (For security purposes, Shavlik Technologies recommends using Windows authentication where possible.) Although administrative access is not required, this account does need permissions to create and populate the ShavlikScans database on the specified SQL Server.

In addition, the Shavlik NetChk Protect console machine should be capable of running the NetChk Patch or the NetChk Spyware service with user credentials that have access to the SQL Server. This requires either:

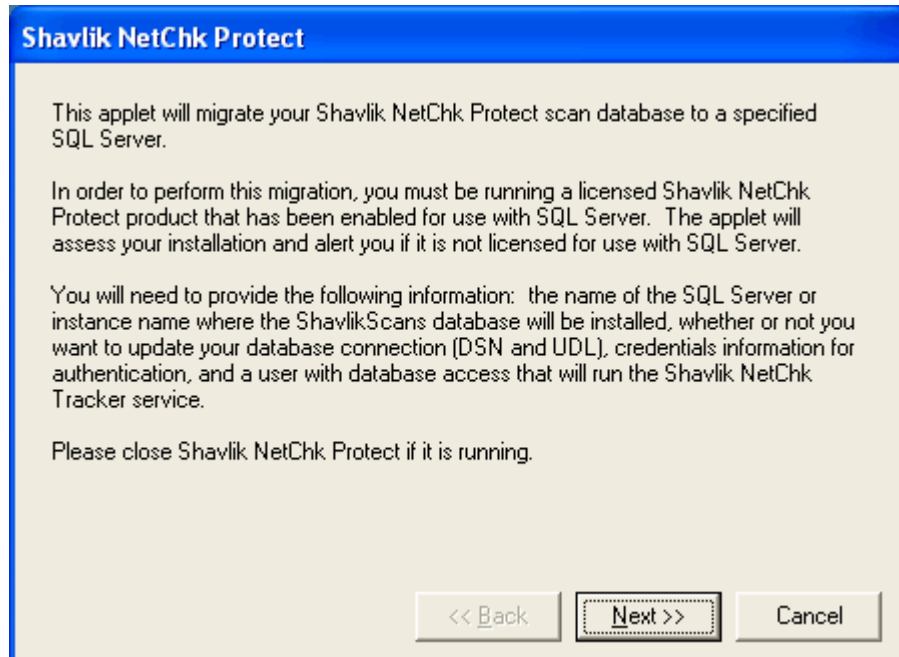
- **LocalSystem** permission, if running the SQL Server on the same machine as the Shavlik NetChk Protect console
- A user account that has permissions to log on as a service to the Shavlik NetChk Protect console machine, and network logon access to the specified remote SQL Server.

**Note:** If you are using SQL Server 2005 you may need to configure it to allow remote connections.

Once the above prerequisites are met, you are ready to begin the migration process.

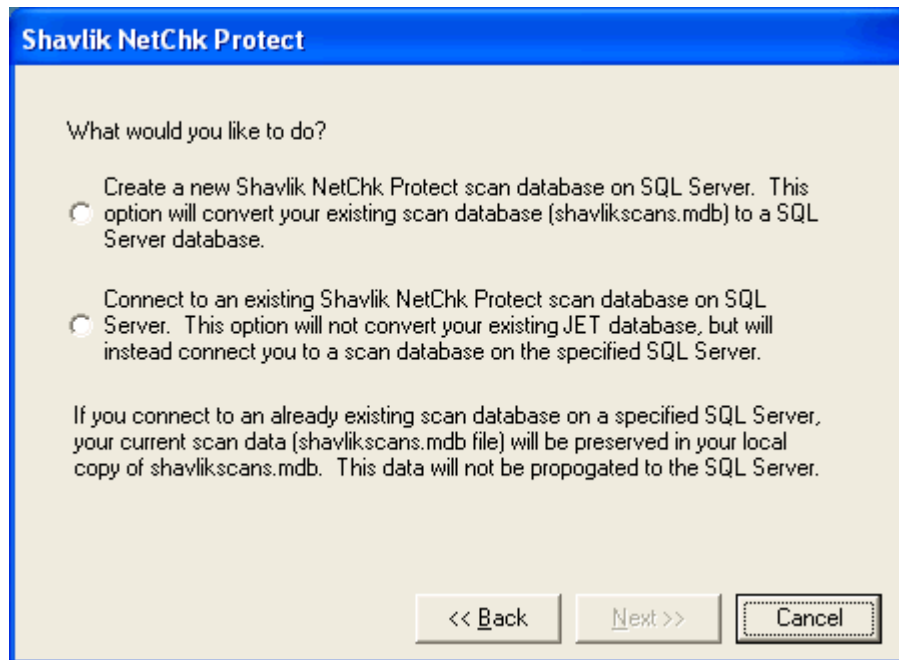
## Running SQLTOOL

Navigate to the folder where you saved the **SQLTOOL.exe** file and run it. The following dialog is displayed:



Click **Next** to continue.

## Selecting Upgrade Options



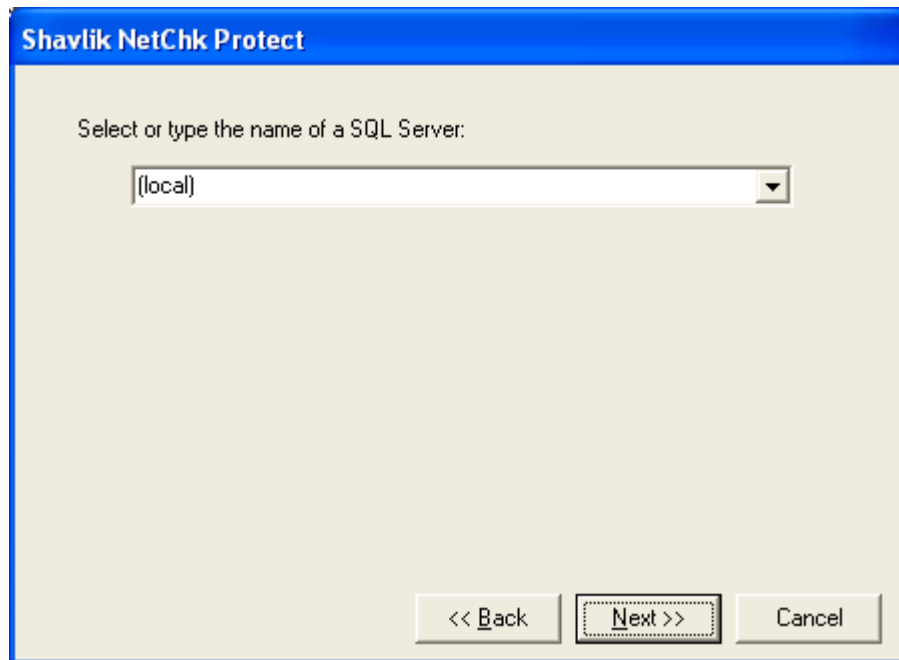
Available options are:

- **Create a new Shavlik NetChk Protect scan database on SQL Server.** Select this option if you would like to migrate your existing JET database (named **ShavlikScans.mdb**) to an SQL Server database. This option will only be allowed if there are no other Shavlik NetChk Protect databases residing on this SQL instance.
- **Connect to an existing Shavlik NetChk Protect scan database on SQL Server.** Select this option to have your Shavlik NetChk Protect console point to an existing SQL-enabled Shavlik NetChk Protect database. Your local scan database (**ShavlikScans.mdb**) will not be migrated to the SQL database, but will be preserved for future use on the local console.

Select the desired option and then click **Next**.

**Note:** Either option will update your DSN (dsnHFNetChkPro4) and UDL (ShavlikScans.udl) to use the SQL Server Database.

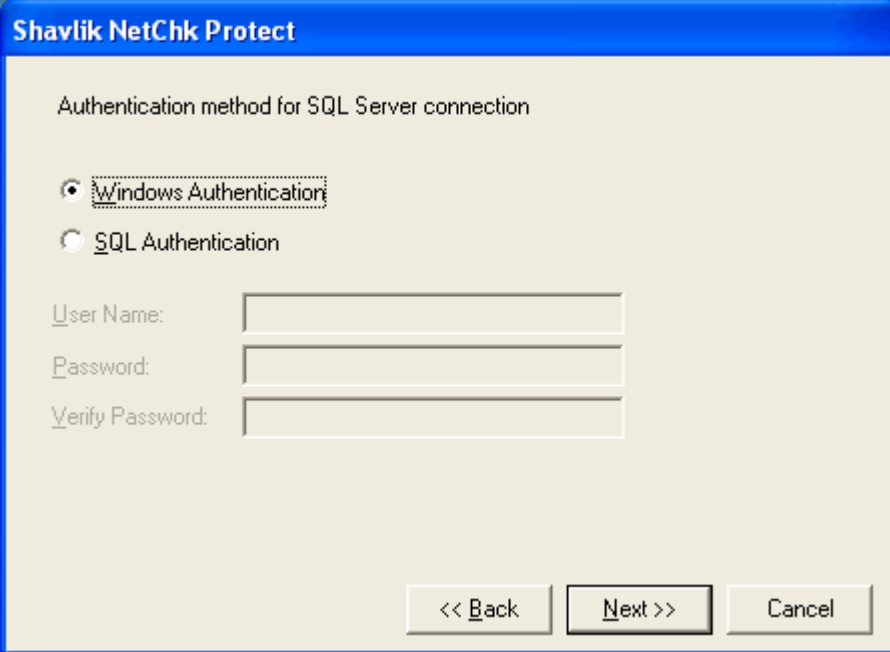
## Specifying the Name of the SQL Server



Click on the drop-down list box to display the list of machines that have an SQL Server installation and that are potential candidates to receive the **ShavlikScans.mdb** database. You can select one of the available options or you can type a new name. You can specify a machine or you can specify a machine and the SQL Server instance running on that machine. The default value for this option is the local machine.

After specifying the machine or machine\instance, click **Next**.

## Selecting Authentication



The screenshot shows a dialog box titled "Shavlik NetChk Protect". The main text reads "Authentication method for SQL Server connection". There are two radio button options: "Windows Authentication" (which is selected) and "SQL Authentication". Below these are three text input fields labeled "User Name:", "Password:", and "Verify Password:". At the bottom right, there are three buttons: "<< Back", "Next >>", and "Cancel".

Available options are:

- **Windows Authentication.** This is the recommended and default option. SQLTOOL will use your currently logged in user name and password to log onto the SQL Server database and migrate the **ShavlikScans.mdb** database.
- **SQL Authentication.** Select this option to enter a specific user name and password combination when logging onto the specified SQL Server.

**Caution!** If you supply SQL authentication credentials and have not implemented SSL encryption for SQL connections, the credentials will be passed over the network in clear text.

Select an option and then click **Next**.

## Select an Account to Run the Shavlik NetChk Protect Service

**Shavlik NetChk Protect**

Please specify an account to be used to launch the Shavlik Netchk Patch Service. If the SQL Server you have chosen is installed on the same machine as the Shavlik NetChk Protect console, you can run this service as the Local System account. If the SQL Server is located on a remote machine, please enter a username and password for an account that has access to the remote SQL Server. This account also needs to have permissions on your local system (in order to launch the Shavlik NetChk Protect Service) and needs to have the right to logon to your local machine as a service.

Local System account

This account:

User Name:

Password:

Verify Password:

<< Back    Next >>    Cancel

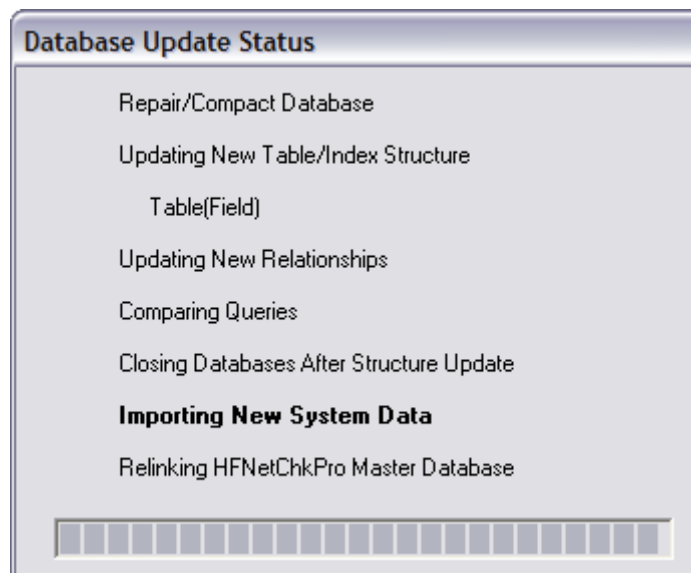
Available options are:

- **Local System account.** This is the recommended option if the SQL Server database is installed on the local machine.
- **This account.** This is the recommended option if the SQL Server database is not on this machine. Specifying a user name and password enables the Shavlik NetChk Tracker to log on to the remote SQL Server and provide deployment status information.

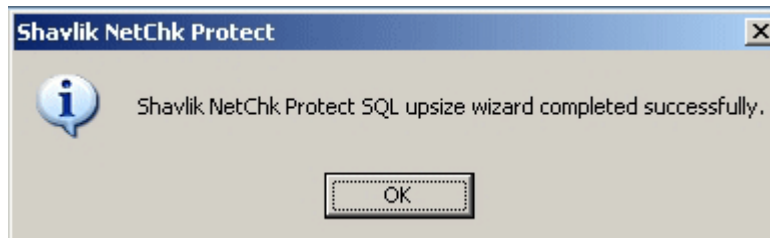
Select an option, specify a user name and password if needed (if not running as **LocalSystem**), and then click **Next**.

Review the upgrade information and when you are ready to start the migration process, click **Finish**.

## Displaying Migration Status



This dialog displays the migration activities and their progress. Once the process is completed, the following dialog is displayed:



Click **OK**. You are now ready to use Shavlik NetChk Protect with your SQL Server database.

## SQLTOOL Error Conditions and Messages

**(1) This installation of Shavlik NetChk Protect is not licensed for use with the SQL Tool.**

SQLTOOL displays this error message if the Shavlik NetChk Protect registered license key does not have SQL enabled.

**(2) The SQL Upsizer setup has detected that you are currently running Shavlik NetChk Protect.**

SQLTOOL displays this error message if the Shavlik NetChk Protect application is currently running. Please close Shavlik NetChk Protect and try again.

**(3) An error occurred contacting SQL Server.**

SQLTOOL displays this error message if it cannot connect to the SQL Server using the machine name or the machine name\instance entered. Please re-enter the machine name or machine name\instance and try again.

**(4) Unable to connect to SQL Server.**

SQLTOOL displays this error message if it cannot connect to the SQL Server using the supplied authentication credentials. Please re-enter credentials and try again.

**(5) The SQL server that you have selected to install the ShavlikScans database does not appear to have SP3 for SQL Server 2000 installed .**

SQLTOOL displays this error message when it detects the SQL Server 2000 does not have SP3 installed. We recommend that you update this server to SP3 or later (or to SQL Server 2005) so that you have the latest security fixes. Abort the upgrade, update the SQL Server and try again.

**(6) SQL DMO is not installed on this workstation.**

SQLTOOL displays this error message if it detects that this machine does not have SQL Client Tools installed. Please install SQL Client Tools and try again.

**(7) Error: -2147221503. SQL Server, [Server Name], does not exist or access denied.**

SQLTOOL displays this error message if it detects that it cannot connect to the SQL Server. The server is down or the SQL Server Service Manager on the server is down. Please check the server and try again.

**(8) The ShavlikScans database already exists on the selected server, [Server Name].**

SQLTOOL displays this error message if it detects that the selected server already has a ShavlikScans database. You may either choose to connect your console to this database (and not convert your own database), or you may select an alternate SQL Server instance or database that does not have an existing ShavlikScans database.

**(9) Shavlik NetChk Protect SQL Upsize wizard did not complete.**

SQLTOOL displays this error message if did not perform a successful upgrade or if you cancelled the update process at any time.

## Reverting back to a JET database

If you would like to disconnect from the SQL Server database and connect to your previous database, please follow these instructions:

**Note:** These steps are performed on a machine running Windows 2000. The steps on other supported machines will be similar.

- (Step 1) **Start → Settings → Control Panel** to display the Control Panel window.
- (Step 2) Double-click **Administrative Tools** to display the Administrative Tools window.
- (Step 3) Double-click **Data Sources (ODBC)** to display the ODBC Data Source Administrator window.
- (Step 4) Click the **System DSN** tab to display the System Data Sources.
- (Step 5) Select **dsnHFNetChkPro4** and click **Configure** to display the Microsoft SQL Server DSN Configuration window.
- (Step 6) Press Control + C to copy **dsnHFNetChkPro4** to the clipboard and then click **Cancel** to display the System DSN Tab.
- (Step 7) Select **dsnHFNetChkPro4** and then click **Remove** to delete the dsnHFNetChkPro4. Click **Yes** on the ODBC Administrator confirmation window. The System DSN Tab is displayed.
- (Step 8) Click the **Add** button to display the Create New Data Source window.
- (Step 9) Select **Microsoft Access Driver (\*.mdb)** and then click **Finish** to display the ODBC Microsoft Access Set up window.
- (Step 10) Press Control + V to paste **dsnHFNetChkPro4** into the **Data Source Name** field. Click the **(Database) Select** button to display the Select Database window.
- (Step 11) Navigate to **C:\Program Files\Shavlik Technologies\NetChk** and select **ShavlikScans.mdb**. Click **OK** to display the ODBC Microsoft Access Set up window.
- (Step 12) Click **OK** to display the ODBC Data Source Administrator window.
- (Step 13) Click **OK** to close the ODBC Data Source Administrator window.
- (Step 14) Navigate to **C:\Program Files\Shavlik Technologies\NetChk**.
- (Step 15) Locate the **ShavlikScans.udl** file.
- (Step 16) Locate the *old* **ShavlikScans.udl** file.
- (Step 17) Delete the **ShavlikScans.udl** file.
- (Step 18) Rename the *old* **ShavlikScans.udl** file to **ShavlikScans.udl**.
- (Step 19) Run the registry editor, navigate to **My Computer\HKEY\_LOCAL\_MACHINE\SOFTWARE\Shavlik\HFNetChkPro4\GUI\** and change **AuthenticationType** value to 0.
- (Step 20) **DONE!**

## Obtaining support

If you need further assistance with SQLTOOL, please refer to the support options listed below:

- View the online documentation (this file).
- Email us at [support@shavlik.com](mailto:support@shavlik.com).
- Visit our online forum at <http://forum.shavlik.com>.
- Shavlik Technologies takes security very seriously and aims to quickly address any security-related problems involving our products. Please email [security@shavlik.com](mailto:security@shavlik.com) to report security issues to us directly.

# End User License Agreement

## 1. Contract Formation.

(a) Nature of Document. This document is a legal agreement (the "EULA") between you purchaser (the "Licensee") and Shavlik Technologies, LLC ("Shavlik"), for the Shavlik product identified above, which includes computer software and may included associated media, printed materials and electronic documentation (the "Product").

(b) Non-Negotiability of Terms. IMPORTANT: SHAVLIK IS WILLING TO LICENSE THE PRODUCT TO YOU ONLY UPON THE CONDITIONS THAT YOU ACCEPT ALL OF THE TERMS CONTAINED IN THIS AGREEMENT.

YOU AGREE TO BE BOUND BY THE TERMS OF THIS EULA BY INSTALLING, COPYING OR OTHERWISE USING THE PRODUCT. IF YOU DO NOT AGREE, YOU ARE NOT AUTHORIZED TO INSTALL OR USE THE PRODUCT.

(c) Acceptance or Rejection of Agreement. IF YOU DO NOT AGREE TO THESE TERMS, THEN SHAVLIK IS NOT WILLING TO LICENSE THE PRODUCT TO YOU. IN SUCH AN EVENT, YOU MAY PROMPTLY RETURN THE UNINSTALLED PRODUCT TO SHAVLIK OR THE DEALER FROM WHICH YOU MADE THE PURCHASE FOR A FULL REFUND OF THE PRICE PAID.

## 2. License Grant.

Shavlik grants to you the right to used one copy of the Product together with any updates provided by Shavlik in the manner described in this Agreement.

## 3. Use Limitations.

(a) This Product may not be incorporated in, or used in conjunction with, any other product for any use without the express written consent of Shavlik Technologies, LLC. Specifically, the Product cannot be used as a "child process" of another program, or batch file without the express written permission of Shavlik Technologies, LLC.

(b) The Product may not be sold or redistributed in any manner without the express written permission of Shavlik Technologies, LLC

(c) Networks. The Product may not be used on a computer network or remote access arrangement (by two different people in two different places at the same time) without acquiring an additional license or licenses. For any multiple user or remote access arrangement you must acquire and dedicate a license for each computer on which the Product is used or to which it is distributed.

(d) Permitted Copies. You may make one copy of the Product solely for backup or archival purposes. You may not copy any written materials accompanying the Product.

(e) Single Permanent Transfer Permitted.

(i) You may not rent or lease the Product. But you may transfer the Product on a permanent basis provided you retain no copies and the recipient agrees to accept the terms and conditions of this Agreement. If you transfer the Product, you must at the same time either transfer all copies to the recipient or destroy any copies not transferred, including modifications and portions of the program contained or merged into other Product programs. If the Product has been updated, any transfer must include the most recent update and all prior versions.

(ii) You may not sublicense, assign or transfer the license or the Product except as expressly provided by this Agreement. Any attempt otherwise to sublicense, assign, or transfer any of the rights, duties, or responsibilities hereunder is void.

(f) Reverse Engineering Prohibited. You may not reverse engineer, decompile, or disassemble the Product.

(g) Shavlik is not obligated to provide support services in conjunction with the Product unless you and Shavlik have entered into a separate Maintenance Plan.

(h) This EULA applies to updates or supplements to the original Product provided by Shavlik, unless we provide other terms along with the update or supplement.

#### 4. Copyright Limitations.

(a) Ownership. Shavlik owns the Product; and all copyright and other intellectual rights in the Product; and under the terms of this Agreement you receive only a limited right to use the Product. The Product is protected both by United States laws and international treaty provisions.

(b) No Copies. Except as expressly permitted under the "Use Limitations" above, you may not copy the Product program or accompanying written materials.

(c) Copyright Notices. You must reproduce and include the copyright notice and any other intellectual property rights notices on any copy permitted by this Agreement.

#### 5. Term.

(a) License Duration. The license is effective until terminated.

(b) Termination.

(i) You may terminate the license at any time by notifying Shavlik in writing.

(ii) The license will automatically terminate upon your failure to comply with the terms and conditions of this Agreement.

(c) Disposition of Product. You agree that upon termination to destroy the Product, together with all copies, partial copies, modifications and merged portions in any form and together with the accompanying written materials.

#### 6. Limited Warranties.

(a) Licensee Responsible for Installation and Use. You assume responsibility for the selection of the Product to achieve your intended results, and for the installation, use, and results obtained from the Product.

(b) No Performance Warranty.

(i) THE PRODUCT IS PROVIDED "AS IS" WITHOUT WARRANTY OF ANY KIND, EITHER EXPRESSED OR IMPLIED, INCLUDING, BUT NOT LIMITED TO, THE IMPLIED WARRANTIES OF MERCHANTABILITY AND FITNESS FOR A PARTICULAR PURPOSE. THE ENTIRE RISK AS TO THE QUALITY AND PERFORMANCE OF THE PRODUCT IS WITH YOU.

(ii) SHAVLIK DOES NOT WARRANT THAT THE FUNCTIONS CONTAINED IN THE PRODUCT WILL MEET YOUR REQUIREMENTS OR THAT THE OPERATION OF THE PRODUCT WILL BE UNINTERRUPTED OR ERROR FREE. THE ENTIRE RISK AS TO THE QUALITY AND PERFORMANCE OF THE PRODUCT IS WITH YOU. SHOULD THE PROGRAM PROVE DEFECTIVE YOU (AND NOT SHAVLIK OR ITS AUTHORIZED DEALERS) ASSUME THE ENTIRE COST OF ALL NECESSARY SERVING, REPAIR, OR CORRECTION.

(iii) SOME STATES DO NOT ALLOW THE EXCLUSION OF IMPLIED WARRANTIES, SO THE ABOVE EXCLUSION MAY NOT APPLY TO YOU. THIS WARRANTY GIVES YOU SPECIFIC LEGAL RIGHTS AND YOU MAY ALSO HAVE OTHER RIGHTS WHICH VARY FROM STATE TO STATE.

(iv) Shavlik does not warrant that the functions contained in the Product will meet your requirements or that the operation of the Product will be uninterrupted or error free.

(c) No Other Warranty. SHAVLIK AND ITS DEALERS DISCLAIM ALL OTHER WARRANTIES, EITHER EXPRESS OR IMPLIED, INCLUDING, BUT LIMITED TO, IMPLIED WARRANTIES OR MERCHANTABILITY AND FITNESS FOR A PARTICULAR PURPOSE, WITH REGARD TO THE PRODUCT AND THE MEDIUM CONTAINING THE SAME.

## 7. Limited Remedies.

(a) Limitation of Liability and Remedies. NOTWITHSTANDING ANY DAMAGES THAT YOU MIGHT INCUR FOR ANY REASON WHATSOEVER (INCLUDING, WITHOUT LIMITATION, ALL DAMAGES REFERENCED BELOW AND ALL DIRECT OR GENERAL DAMAGES), THE ENTIRE LIABILITY OF SHAVLIK UNDER THE PROVISIONS OF THIS EULA AND YOUR EXCLUSIVE REMEDY FOR ALL OF THE FOREGOING SHALL BE LIMITED TO ACTUAL DAMAGES INCURRED BY YOU BASED ON REASONABLE RELIANCE UP TO THE AMOUNT PAID BY YOU FOR THE PRODUCT. THE FOREGOING LIMITATIONS, EXCLUSIONS AND DISCLAIMERS SHALL APPLY TO THE MAXIMUM EXTENT PERMITTED BY APPLICABLE LAW, EVEN IF ANY REMEDY FAILS ITS ESSENTIAL PURPOSE.

(b) Disclaimer of Consequential Damages. IN NO EVENT WILL SHAVLIK BE LIABLE TO YOU FOR ANY DAMAGES, INCLUDING ANY LOST PROFITS, LOST SAVINGS, OR OTHER INCIDENTAL OR CONSEQUENTIAL DAMAGES ARISING OUT OF THE USE OR INABILITY TO USE THE PRODUCT EVEN IF SHAVLIK HAS BEEN ADVISED OF THE POSSIBILITY OF SUCH DAMAGES OR FOR ANY CLAIM BY ANY OTHER PARTY.

(c) SOME STATES DO NOT ALLOW THE LIMITATION OR EXCLUSION OF LIABILITY FOR INCIDENTAL OR CONSEQUENTIAL DAMAGES, SO THE ABOVE LIMITATION OR EXCLUSION MAY NOT APPLY TO YOU.

#### 8. General Provisions.

(a) Governing Law. This Agreement shall be governed and construed by the laws of the State of Minnesota.

(b) Severability. If any provision of this Agreement is found void or unenforceable, it will not affect the validity of the balance of this Agreement, which shall remain valid and enforceable according to its terms. If any remedy provided is determined to have failed its essential purpose, all limitations of liability and exclusions of damages set forth herein shall remain in full force and effect.

(c) Acknowledgment and Exclusivity. YOU ACKNOWLEDGE THAT YOU HAVE READ THIS AGREEMENT, UNDERSTAND IT, AND AGREE TO BE BOUND BY ITS TERMS AND CONDITIONS. YOU FURTHER AGREE THAT IT IS THE COMPLETE AND EXCLUSIVE STATEMENT OF THE AGREEMENT BETWEEN US WHICH SUPERCEDES ANY PROPOSAL OR PRIOR AGREEMENT, ORAL OR WRITTEN, AND ANY OTHER COMMUNICATIONS BETWEEN US RELATING TO THE SUBJECT MATTER OF THIS AGREEMENT.

(d) Purchaser Questions. Should you have any questions concerning this Agreement, or if you desire to contact Shavlik for any reason, please write, fax, or e-mail Shavlik Technologies, LLC 2665 Long Lake Road, Roseville, MN 55113, Telephone: 800.690.6911; fax: 651.426.3345; e-mail: info@shavlik.com.

(e) U.S. Government Restricted Rights. The Product and documentation are provided with RESTRICTIVE RIGHTS. Use, duplication, or disclosure by the Government is subject to restrictions: if supplied to the Department of Defense (DoD), the Product is "Commercial Computer Product" and the Government acquires the Product with "restricted rights," as defined in Clause 252.227-701(c)(1) of the DFARS; if the Product is supplied to any other Government unit or agency, the Government's rights in the Product are defined in Clause 52.227-19(c)(2) of the FAR; but if the Product is supplied to NASA, the Government's rights are defined in Clause 18-52.227-86(d) of the NASA supplement to FAR. The manufacturer is Shavlik Technologies, LLC 2665 Long Lake Road, Roseville, MN 55113.